



**BAKU
STATE
UNIVERSITY**

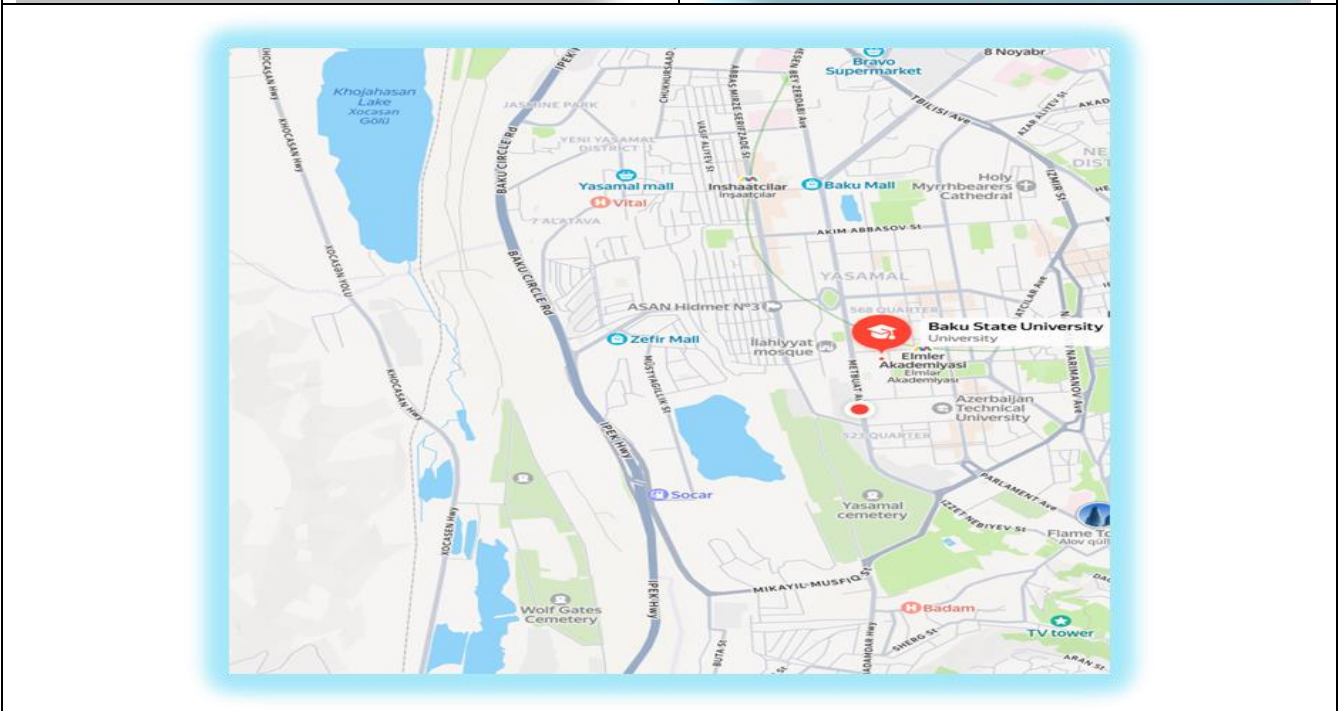


UI GreenMetric Questionnaire

University : Baku State University
Country : Azerbaijan
Web Address : <https://bdu.info.az/en>
SDG Focused Web Adress: <https://sdg.bsu.edu.az/>

[5] Transportation (TR)

[5.5] Shuttle Services (TR.2)





**BAKU
STATE
UNIVERSITY**



Description:

Baku State University (BSU), as one of the leading higher education institutions in the region, is committed to integrating sustainability principles into its academic, operational, and social frameworks. The University continuously develops and implements environmentally responsible practices in alignment with global Sustainable Development Goals (SDGs). BSU's sustainability strategy is based on a holistic approach encompassing infrastructure development, energy efficiency, waste management, sustainable transportation, water conservation, and environmental education. Through coordinated institutional efforts, the University aims to minimize its environmental footprint while enhancing the quality of education and campus life.

In the area of Energy and Climate Change, BSU promotes the use of energy-efficient technologies, including LED lighting and modernized infrastructure systems, to reduce overall energy consumption. The University is also expanding the integration of renewable energy sources and smart building solutions to optimize resource efficiency and support long-term climate action objectives.

Regarding Waste Management, BSU implements waste reduction and recycling initiatives supported by awareness campaigns and digitalization processes. These measures contribute to minimizing waste generation and fostering responsible consumption among students and staff. The University also ensures the safe handling and disposal of hazardous waste in accordance with environmental standards.

In the field of Transportation, BSU has established an organized and centralized transport system that supports academic activities, student engagement, and staff mobility. The University maintains a fleet of approximately 50 buses, which are utilized for academic field trips, internships, and participation in state-level events. In addition, these buses operate on a regular schedule five days a week, ensuring reliable and efficient transportation services across the university community. By promoting shared mobility and reducing dependence on private vehicles, BSU contributes to lowering traffic congestion and carbon emissions, thereby advancing its sustainable mobility objectives.

Furthermore, BSU prioritizes Education and Research in sustainability by integrating environmental topics into academic curricula and supporting student participation in scientific, social, and volunteer activities. These initiatives foster environmental awareness, innovation, and a strong sense of social responsibility within the academic community.

BSU's campus planning and infrastructure management reflect a strong commitment to sustainability through efficient land use, accessible facilities, and continuous improvements in environmental performance.

Overall, BSU continues to strengthen its role as a sustainability-oriented institution by implementing practical solutions, promoting environmental awareness, and aligning its development strategy with international standards. The University remains committed to continuous improvement in sustainability performance and to contributing effectively to global environmental challenges.

Baku State University provides regular shuttle transportation services for students, academic staff, and administrative personnel to facilitate mobility between university facilities and



designated campus-related locations. The university has prioritized sustainable transportation by operating shuttle services using zero-emission vehicles, contributing to the reduction of greenhouse gas emissions and supporting environmentally responsible campus operations. These regular shuttle services help minimize the use of private combustion-engine vehicles, reduce traffic congestion around campus, and promote cleaner, more sustainable transportation practices in alignment with the university’s sustainability strategy and commitment to carbon reduction.

SUSTAINABILITY AREA	BSU INITIATIVES AND ACTIVITIES	IMPACT CONTRIBUTION
INSTITUTIONAL SUSTAINABILITY STRATEGY	Baku State University integrates sustainability principles into academic, operational, and social frameworks aligned with the UN Sustainable Development Goals (SDGs). The university applies a holistic sustainability strategy covering infrastructure, energy, waste, transportation, water conservation, and environmental education.	Establishes institution-wide sustainability governance and long-term environmental responsibility.
ENERGY AND CLIMATE CHANGE	Implementation of energy-efficient technologies including LED lighting systems, modernization of infrastructure, expansion of renewable energy integration, and adoption of smart building solutions to optimize energy use.	Reduces energy consumption, lowers carbon emissions, and supports climate action objectives.
RENEWABLE ENERGY & SMART INFRASTRUCTURE	Gradual expansion of renewable energy sources and installation of smart building technologies to improve monitoring and optimize resource efficiency.	Supports transition toward low-carbon campus operations and long-term energy sustainability.
WASTE MANAGEMENT	Implementation of waste reduction policies, recycling initiatives, awareness campaigns, digitalization of administrative processes to reduce paper usage,	Minimizes waste generation, promotes responsible consumption behavior, and ensures



	<p>and environmentally safe disposal of hazardous waste according to environmental regulations.</p>	<p>environmental compliance.</p>
<p>SUSTAINABLE TRANSPORTATION SYSTEM</p>	<p>BSU maintains an organized centralized transportation system supporting academic activities, student engagement, and staff mobility. The university operates approximately 50 buses for field trips, internships, educational visits, and participation in state-level academic events. Shuttle services operate regularly 5 days per week.</p>	<p>Reduces private vehicle dependency, decreases traffic congestion, lowers transportation-related emissions, and improves campus mobility efficiency.</p>
<p>ZERO-EMISSION SHUTTLE SERVICES</p>	<p>Regular shuttle transportation is provided for students, academic staff, and administrative personnel between university facilities and designated academic locations. Shuttle operations prioritize zero-emission vehicles as part of BSU's green transportation policy.</p>	<p>Contributes directly to greenhouse gas emission reduction and supports environmentally responsible transportation practices.</p>
<p>SHARED MOBILITY PROMOTION</p>	<p>University transportation policies encourage collective transportation solutions instead of individual private vehicle use for academic and institutional activities.</p>	<p>Lowers campus traffic volume and reduces fossil fuel consumption.</p>
<p>WATER CONSERVATION AND RESOURCE MANAGEMENT</p>	<p>BSU implements water conservation practices through sustainable infrastructure management, efficient water use systems, and campus environmental planning aimed at responsible water consumption.</p>	<p>Supports efficient natural resource management and strengthens climate resilience.</p>
<p>EDUCATION FOR SUSTAINABILITY</p>	<p>Environmental sustainability topics are integrated into academic curricula across multiple</p>	<p>Develops sustainability literacy and environmental</p>



	<p>disciplines. The university actively promotes environmental awareness through teaching and interdisciplinary educational initiatives.</p>	<p>awareness among students.</p>
<p>RESEARCH AND INNOVATION</p>	<p>The university supports student and faculty participation in sustainability-related scientific research, innovation projects, volunteer activities, and community engagement programs focused on environmental protection.</p>	<p>Encourages innovation, research capacity building, and sustainable problem-solving.</p>
<p>CAMPUS INFRASTRUCTURE AND PLANNING</p>	<p>Continuous improvement of campus infrastructure focusing on efficient land use, accessible facilities, sustainable construction practices, and environmentally responsible campus management systems.</p>	<p>Improves environmental performance and ensures sustainable campus development.</p>
<p>ENVIRONMENTAL AWARENESS AND SOCIAL RESPONSIBILITY</p>	<p>Organization of environmental awareness campaigns, volunteer initiatives, community outreach programs, and student-led sustainability activities.</p>	<p>Strengthens sustainability culture and promotes social responsibility within the academic community.</p>
<p>CONTINUOUS IMPROVEMENT AND INTERNATIONAL ALIGNMENT</p>	<p>BSU continuously improves sustainability performance by aligning institutional development strategies with international sustainability frameworks, environmental standards, and global higher education best practices.</p>	<p>Enhances international competitiveness and reinforces BSU's position as a sustainability-oriented university.</p>

Additional evidence link (i.e., for videos, more images, or other files that are not included in this file):



**BAKU
STATE
UNIVERSITY**





**BAKU
STATE
UNIVERSITY**





**BAKU
STATE
UNIVERSITY**



Baku State University organized field training activities for students of the Faculties of Geography, Ecology, and Soil Science at the university's Quba Education and Recreation Center. Transportation for students and academic staff was provided through organized bus services, supporting coordinated and shared mobility practices.

The initiative combined practical environmental education with sustainable group transportation, reducing the need for individual vehicle use during academic field activities. The program also included international academic participation through lectures delivered by a specialist from Ain Shams University.

This activity reflects BSU's commitment to sustainability-oriented education, environmentally responsible transportation, and experiential learning practices.

For more details please see:

- ❖ <https://sdg.bsu.edu.az/news/field-training-at-bsus-guba-education-and-recreation-center-has-begun>

Baku State University organized field training activities for students of the Faculty of Ecology and Soil Science in the Shamakhi and Gobustan districts. The program combined practical environmental education with organized group transportation, supporting sustainable mobility practices during academic field activities.

During the training, students conducted environmental and soil-related research, including soil analysis, air quality monitoring, noise measurements, and radiation assessments using portable devices. The fieldwork also provided practical experience in landscape observation, ecological monitoring, and sustainable land management studies.

This initiative demonstrates BSU's commitment to sustainability-oriented education, environmental research, and coordinated transportation practices that reduce reliance on individual vehicle use.

For more details please see:

- ❖ <https://sdg.bsu.edu.az/news/bsu-faculty-of-ecology-and-soil-science-students-conduct-field-training-in-shamakhi-and-gobustan>

Baku State University launched field training programs for final-year students from the Faculties of Geography, Ecology and Soil Science, Biology, and History in various regions of Azerbaijan, including Quba, Shamakhi, Gabala, and Lankaran.

The program integrates practical academic learning with organized transportation and coordinated field mobility, supporting sustainable group travel practices for educational activities. Students conducted studies related to geography, ecology, hydrometeorology, biodiversity, tourism, and historical heritage.

By organizing collective transportation for field education activities, BSU contributes to reducing individual vehicle use while promoting environmentally responsible and sustainability-oriented academic practices.



**BAKU
STATE
UNIVERSITY**



For more details please see:

- ❖ <https://sdg.bsu.edu.az/news/field-training-programs-commence-at-bsu>

Baku State University organized a production internship program for students of the Faculty of History at several historical and cultural institutions, including the Gobustan National Historical-Artistic Reserve, Guba Genocide Memorial Complex, and the Gabala Archaeological Center.

The internship program combined practical educational activities with organized group transportation, supporting coordinated and sustainable mobility practices during academic travel. Through field-based learning, students gained practical knowledge of Azerbaijan's archaeological, historical, and ethnographic heritage.

By utilizing collective transportation for educational internships, BSU contributes to reducing reliance on individual vehicle use while promoting environmentally responsible and sustainability-oriented academic activities.

For more details please see:

- ❖ <https://sdg.bsu.edu.az/news/history-faculty-students-complete-internship-program>

Fourth-year students of the Faculty of Biology at Baku State University participated in a comprehensive field training program in Lankaran, Guba, and Shamakhi. The practice covered diverse ecosystems, including Gizilaghaj State Reserve and Hirkan National Park, where students conducted observations of vertebrate and invertebrate species and collected samples of local flora for herbarium preparation.

In Guba, they studied mountain-forest, meadow, and river ecosystems, focusing on biodiversity in the Qarachay basin and Chenlibel Mountain. In Shamakhi, fieldwork was conducted around the N. Tusi Observatory and along the Shamakhi–Damirchi–Lahij route, where vegetation cover was analyzed and biological samples were collected.

For more details please see:

- ❖ <https://sdg.bsu.edu.az/news/bsu-biology-faculty-students-participate-in-field-practice-in-lankaran,-guba,-and-shamakhi>

Fourth-year students of Baku State University's Faculty of Biology took part in organized field training programs in the Guba and Lankaran regions, focusing on biodiversity, ecosystems, and water bioresources. The program included coordinated educational travel to national parks, rivers, and the university's training center for practical environmental research activities. The initiative supports sustainable academic mobility and field-based environmental education through structured group transportation and regional ecological studies.



**BAKU
STATE
UNIVERSITY**



For more details please see:

- ❖ <https://sdg.bsu.edu.az/news/bsus-students-engage-in-the-field-experience-in-lankaran-and-guba>





**BAKU
STATE
UNIVERSITY**

