



UI GreenMetric Questionnaire

University : Baku State University
 Country : Azerbaijan
 Web Address : <http://bsu.edu.az/en>
 SDG Focused Web Adress: <https://sdg.bsu.edu.az/>

[7] Governance and Digitalization

[7.2] University budget for sustainability effort (in US Dollars)

Year	2023	2024	2025	Average
Total Institutional Budget (USD)	\$118,823,529	\$122,352,941	\$124,117,647	\$121,764,706
Sustainability Budget (USD)	\$20,200,000	\$22,023,529	\$24,823,529	\$22,349,019
Sustainability Percentage	17%	18%	20%	18.3%

TRANSPORTATION

ELECTRIC VEHICLES AND SUSTAINABLE CAMPUS TRANSPORTATION	\$350,000
PUBLIC TRANSPORTATION SUBSIDIES FOR STUDENTS AND STAFF	\$900,000
PERSONNEL COST	
DEDICATED ADMINISTRATIVE STAFF WORKING ON SUSTAINABILITY INITIATIVES	\$2,300,000
FACULTY AND RESEARCHERS INVOLVED IN SUSTAINABILITY EDUCATION/RESEARCH	\$6,800,000
INFRASTRUCTURES	
GREEN BUILDING RENOVATIONS AND CAMPUS ENERGY EFFICIENCY IMPROVEMENTS	\$5,500,000
WATER-SAVING INFRASTRUCTURE AND SMART UTILITY SYSTEMS	\$420,000
CAMPUS LANDSCAPING, TREE PLANTING AND BIODIVERSITY MAINTENANCE	\$600,000
BOTANICAL GARDEN AND GREEN AREA MAINTENANCE	\$250,000
WASTE MANAGEMENT AND RECYCLING SYSTEMS	\$500,000
RESEARCH	
RESEARCH FUNDING ALLOCATED TO SUSTAINABILITY-RELATED PROJECTS	\$11,200,000
OTHER PROJECTS AND EVENTS	
SUSTAINABILITY AWARENESS CAMPAIGNS AND SDG-RELATED UNIVERSITY EVENTS	\$320,000
GREEN CAMPUS INNOVATION COMPETITIONS AND ENVIRONMENTAL PROJECTS	\$480,000
TOTAL	\$48,970,000

Item 1.17	Value 2025 (USD)
FACILITIES	
Accessibility services and support for students with disabilities	\$180,000
Student welfare and inclusive education support programs	\$1,250,000
Psychological counseling and student wellbeing services	\$420,000

Staff health insurance and employee wellbeing programs	\$1,950,000
Salaries for university medical and health support staff	\$5,200,000
University contribution to sports and physical wellbeing activities	\$850,000
Electricity and gas costs compliant with environmental efficiency standards	\$8,500,000

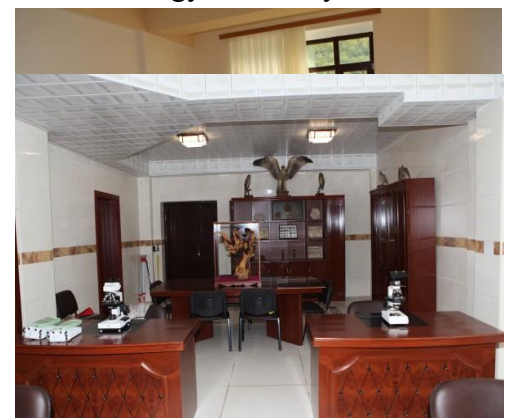


Description:

The following provides a more comprehensive and detailed description of the University Budget for Sustainability Efforts. The university adopts a comprehensive and forward-looking budgeting approach to support sustainability, ensuring that financial resources are aligned with environmental responsibility, social inclusion, and long-term economic resilience. Sustainability is not treated as a separate activity but is fully integrated into institutional financial planning, governance, and strategic development.

A significant portion of the budget is allocated to environmental sustainability initiatives aimed at reducing the university’s ecological footprint. These include investments in energy efficiency, water conservation, waste management systems, and sustainable campus infrastructure.

Funding is directed toward initiatives such as the development of a smart and green campus, with measurable targets like reducing energy consumption and improving resource efficiency over time. These





efforts are guided by institutional sustainability and biodiversity policies, as well as sustainable procurement and investment frameworks.



The university also dedicates financial resources to advancing sustainability through research and innovation. Budget allocations support internal seed funding programs, interdisciplinary research projects, and academic initiatives that address global challenges such as climate change, sustainable cities, and responsible consumption. By funding research and encouraging external grant acquisition, the university strengthens its role as a knowledge hub contributing to sustainable development goals. This approach is reinforced by strategic plans to increase research output, establish



innovation hubs, and enhance collaboration with industry and international partners.



Social sustainability is another core component of the university's budgeting priorities. Financial resources are allocated to scholarships, tuition support, and student welfare programs to ensure equitable access to education. The university provides state-funded study opportunities, targeted financial aid, and affordable accommodation options, particularly for students from low-income or vulnerable backgrounds. Additional funding supports psychological services, career development programs, and mentoring initiatives, contributing to student well-being, retention, and long-term success.



Operational and institutional sustainability are further strengthened through investments in digital transformation and governance systems. The university allocates budget for digital platforms, monitoring tools, and enterprise resource planning (ERP) systems that enhance efficiency, transparency, and data-driven decision-making. These systems enable real-time tracking of performance indicators related to sustainability, ensuring accountability and continuous improvement.

Moreover, the university's long-term financial strategy (2025–2030) embeds sustainability into all major development areas. Budget planning is structured across short-,



medium-, and long-term phases, with clear key performance indicators (KPIs) linked to sustainability outcomes. These include targets for energy reduction, increased research funding, expanded community engagement, and improved student satisfaction and inclusion.



Finally, the budgeting process emphasizes transparency and accountability. Regular financial reporting, performance monitoring, and institutional reviews ensure that sustainability investments are effectively implemented and aligned with both national priorities and global Sustainable Development Goals



(SDGs).

Overall, the university's budget for sustainability reflects a holistic and integrated approach, supporting environmental protection, social equity, and economic efficiency while positioning the institution as a leader in sustainable development.





Additional evidence link:

- ❖ The Accommodation Policy ensures safe, affordable, and inclusive student housing. It prioritizes equal access—especially for disadvantaged students—while promoting well-being, security, and a supportive living environment.

For more information click the link: <https://sdg.bsu.edu.az/accommodation-policy>



- ❖ The Accommodation Policy of Baku State University ensures safe, affordable, and inclusive housing for students and staff. It provides well-equipped dormitories with modern facilities, promotes a healthy and green living environment, and supports student well-being. The policy also ensures equal access, prioritizes vulnerable groups, and includes safety measures and sustainability practices such as eco-friendly infrastructure and resource efficiency.
For more information click the link:
<https://sdg.bsu.edu.az/uploads/files/Accommodation%20policy.pdf>
- ❖ The Climate Action Policy aims to reduce environmental impact by cutting emissions, improving energy efficiency, and promoting sustainability through education and research.
For more information click the link:
<https://sdg.bsu.edu.az/climate-action-policy>
- ❖ Baku State University's Climate Action Policy aims to reduce environmental impact and achieve **net-zero emissions by 2030**. It focuses on energy efficiency, renewable energy use, sustainable transport, waste reduction, and recycling. The university also promotes climate education and research to support global climate goals (SDG 13). For more information click the link:
<https://sdg.bsu.edu.az/uploads/files/Climate%20action%20policy.pdf>
- ❖ Baku State University's Sustainable Investment Policy ensures investments are ethical, environmentally responsible, and aligned with the UN Sustainable Development Goals. It promotes sustainable, long-term financial decisions and avoids harmful environmental impacts. For more information click the link: <https://sdg.bsu.edu.az/sustainable-investment-policy>
- ❖ Baku State University's Sustainable Investment Policy sets a framework for managing investments using **environmental, social, and governance (ESG)** principles. It aims to ensure long-term financial stability while supporting sustainability and responsible resource use. The policy also aligns investment decisions with the university's strategic development goals and reduces negative environmental impact. For more information click the link:
<https://sdg.bsu.edu.az/uploads/files/Sustainable%20investment.pdf>
- ❖ Baku State University's **Sustainable Procurement Policy** ensures that all purchasing decisions consider environmental protection, social responsibility, and sustainability principles. It integrates SDGs into procurement processes, promotes responsible supplier selection, and aims to reduce negative environmental and social impacts while encouraging sustainable consumption and production. For more information click the link:
<https://sdg.bsu.edu.az/sustainable-procurement-policy>
- ❖ Baku State University's Sustainable Procurement Policy ensures purchases are environmentally and socially responsible, supports SDGs, promotes ethical sourcing, and reduces negative impacts. For more information click the link:
<https://sdg.bsu.edu.az/uploads/files/Sustainable%20Procurement%20policy.pdf>
- ❖ Baku State University's **Health, Safety and Wellbeing Policy** is focused on ensuring a safe, healthy, and supportive environment for all students and staff. It includes measures for physical and mental health support, risk prevention, and emergency preparedness, as well as promoting overall wellbeing across the university community. For more information click the link:



<https://sdg.bsu.edu.az/health-safety-and-wellbeing-policy>

- ❖ Baku State University's **Health, Safety and Wellbeing Policy** ensure a safe and healthy environment for students and staff. It focuses on preventing risks, improving workplace safety, providing health support, and promoting overall physical and mental wellbeing across the university.

For more information click the link:

<https://sdg.bsu.edu.az/uploads/files/Health%2C%20Safety%2C%20and%20Wellbeing%20Policy.pdf>

- ❖ Baku State University's **Sustainability Policy on Donations and Funding** ensures that all donations and financial support align with ethical standards, transparency, and sustainability principles. It requires evaluating donors to avoid conflicts of interest, protecting university independence, and ensuring funds support environmentally and socially responsible goals. For more information click the link:

<https://sdg.bsu.edu.az/uploads/files/Sustainability%20policy%20on%20donations%20and%20funding.pdf>

- ❖ Baku State University's "Policies in One Document" compiles key rules on sustainability, ethics, safety, and governance. It ensures transparency and alignment with the UN Sustainable Development Goals. For more information click the link:

<https://sdg.bsu.edu.az/policies-in-one-document>

- ❖ Baku State University's SDG Annual Progress Report 2025 highlights the university's progress in integrating the UN Sustainable Development Goals into education, research, and campus activities. It reviews achievements, ongoing projects, and improvements in sustainability performance, while emphasizing transparency, innovation, and commitment to long-term sustainable development. For more information click the link:

<https://sdg.bsu.edu.az/sdg-annual-progress-report-2025>

- ❖ Baku State University's Annual Progress Report 2025 summarizes the university's achievements in integrating the UN Sustainable Development Goals into education, research, campus life, and partnerships. It highlights progress made during the year, ongoing sustainability initiatives, and the university's commitment to transparency, innovation, and continuous improvement in sustainable development. For more information click the link:

<https://sdg.bsu.edu.az/uploads/files/ANNUAL%20PROGRESS%20REPORT%202025.pdf>

- ❖ Baku State University implements initiatives to reduce food waste through awareness campaigns, responsible consumption practices, and sustainable waste management systems on campus. For more information click the link:

<https://sdg.bsu.edu.az/news/sustainable-food-waste-management-at-baku-state-university>

- ❖ A round table discussion focused on identifying key actors responsible for ensuring ecological sustainability and promoting environmental accountability. For more information click the link:

<https://sdg.bsu.edu.az/news/round-table-on-who-is-the-ensurer-of-ecological>

- ❖ BSU has introduced compulsory yearly training to educate students and staff on social sustainability, ethics, and community responsibility. For more information click the link:



<https://sdg.bsu.edu.az/news/baku-state-university-introduces-mandatory-annual-training-on-social-sustainability>

- ❖ The university promotes interdisciplinary research to address complex global challenges, especially those related to sustainable development. For more information click the link:
<https://sdg.bsu.edu.az/interdisciplinary-research>
- ❖ Baku State University runs a required program that integrates Sustainable Development Goals (SDGs) into education, raising awareness and engagement among students. For more information click the link:
<https://sdg.bsu.edu.az/news/baku-state-universitys-mandatory-programme-on-sdgs-and-social-sustainability>
- ❖ Baku State University actively participates in global collaborations to develop and share best practices for implementing SDGs. For more information click the link:
<https://sdg.bsu.edu.az/news/baku-state-university-leads-international-efforts-to-develop-best-practices-for-sustainable-development-goals>
- ❖ The university supports community development and poverty reduction by linking education with real-world social challenges. For more information click the link:
<https://sdg.bsu.edu.az/news/bridging-education-and-community-development-the-universitys-role-in-promoting-sustainability-and-addressing-poverty>
- ❖ The rector participated in an international congress, highlighting BSU's role in sustainability and global academic cooperation. For more information click the link:
<https://sdg.bsu.edu.az/news/bsu-rector-speaks-at-panel-discussion-of-global-sustainable-development-congress-internationalization>
- ❖ Dedicated mandatory training programs focus on environmental protection and sustainable practices for both staff and students. For more information click the link:
<https://sdg.bsu.edu.az/news/dedicated-mandatory-training-on-environmental-sustainability-for-staff-and-students>
- ❖ Baku State University organizes outreach programs to promote sustainability awareness beyond the university community. For more information click the link:
<https://sdg.bsu.edu.az/news/bsu-outreach-activities-on-sustainable-development>
- ❖ A lecture emphasized the role of scientists and engineers in advancing environmental sustainability and innovation.
For more information click the link:
<https://sdg.bsu.edu.az/news/lecture-on-scientists-and-engineers-contribution-to-enhancing-the-sustainability-of-our-planet-at-bsu>.
- ❖ Baku State University shared its sustainability practices and achievements at an international sustainable development congress. For more information click the link:
<https://sdg.bsu.edu.az/news/bsu-experience-discussed-at-the-global-sustainable-development-congress>



- ❖ Discussion highlighted how scientific innovation and biotechnology contribute to ecological balance and sustainability. For more information click the link:
[https://sdg.bsu.edu.az/news/a-roundtable-discussion-titled-scientific-innovation-and-biotechnology-new-perspectives-in-ensuring-ecological-balance-sustainability-was-held-at-baku-state-university-\(bsu\)](https://sdg.bsu.edu.az/news/a-roundtable-discussion-titled-scientific-innovation-and-biotechnology-new-perspectives-in-ensuring-ecological-balance-sustainability-was-held-at-baku-state-university-(bsu))

- ❖ Baku State University participated in a global conference in Bangkok, exchanging knowledge on sustainable management practices. For more information click the link:
[https://sdg.bsu.edu.az/news/8th-international-conference-on-sustainable-management-\(icsm\)-held-in-hybrid-format-in-bangkok,-thailand](https://sdg.bsu.edu.az/news/8th-international-conference-on-sustainable-management-(icsm)-held-in-hybrid-format-in-bangkok,-thailand)

- ❖ BSU's sustainability performance is evaluated through international rankings, reflecting its commitment to SDGs. For more information click the link:
<https://sdg.bsu.edu.az/qs-sustainability>

- ❖ The university is expanding systems to monitor and reduce carbon emissions across campus. For more information click the link:
<https://sdg.bsu.edu.az/news/baku-state-university-advances-sustainability-expands-low-carbon-energy-monitoring-across-campus>

- ❖ A student organization actively promotes sustainability initiatives and environmental awareness. For more information click the link:
<https://sdg.bsu.edu.az/news/student-led-sustainability-society--baku-state-university>

- ❖ BSU supports biodiversity conservation through research, education, and environmental initiatives. For more information click the link:
<https://sdg.bsu.edu.az/news/sustainability-and-biodiversity>

- ❖ The university integrates green education with youth-led sustainability projects, presented on international platforms. For more information click the link:
<https://sdg.bsu.edu.az/news/integration-of-green-education-and-youth-sustainability-initiatives-at-bsu-presented-on-an-international-platform>